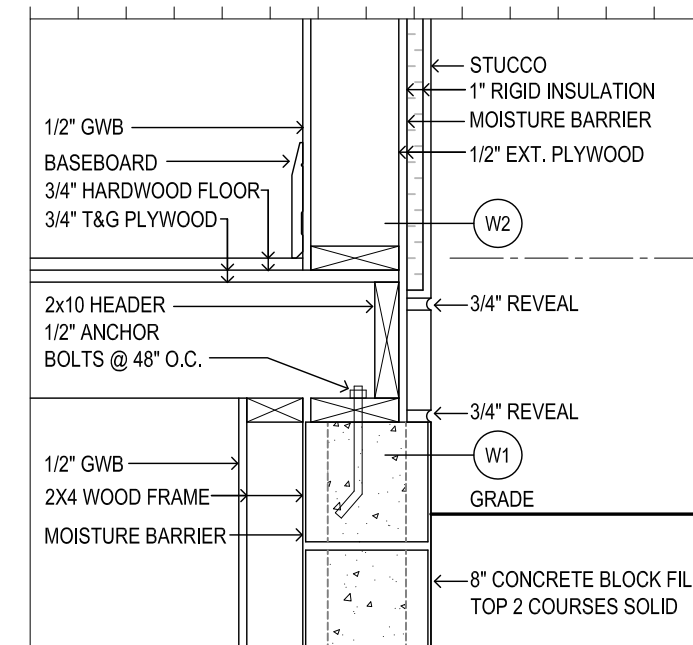
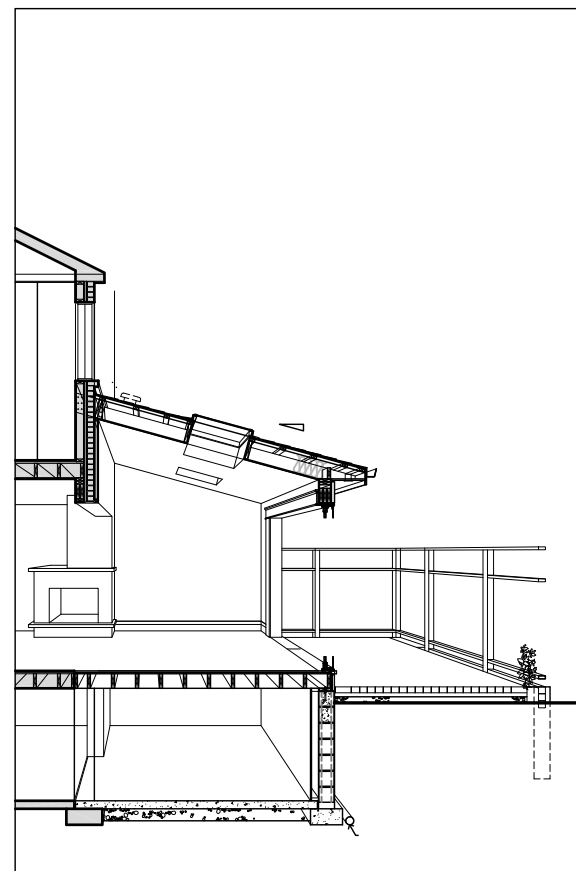


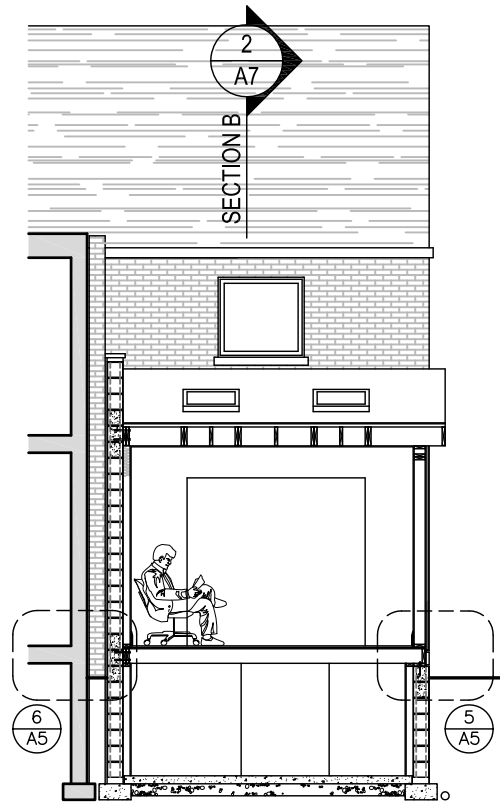
6 FLOOR AT WALL
A5 Scale: 1"=1'-0"



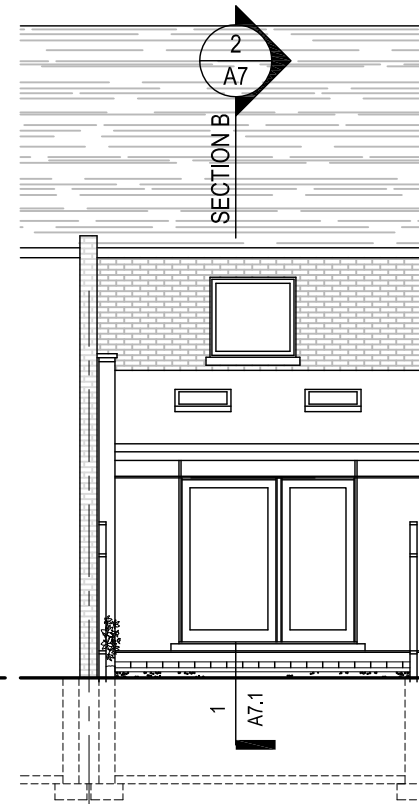
5 FLOOR AT WALL
A5 Scale: 1"=1'-0"



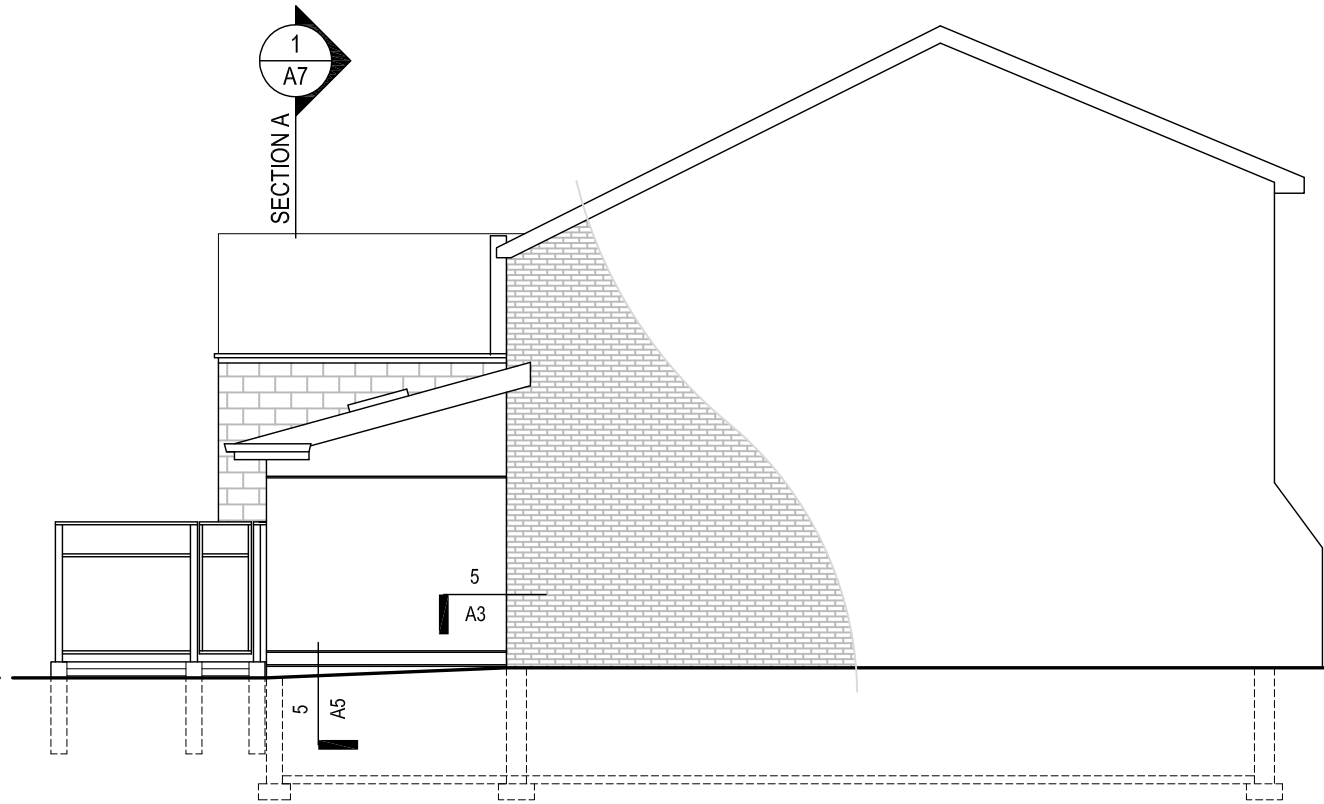
4 SECTION B
A5 Scale: 1/8"=1'-0"



3 SECTION A
A5 Scale: 1/8"=1'-0"



2 NORTH ELEVATION
A5 Scale: 1/8"=1'-0"



1 WEST ELEVATION
A5 Scale: 1/8"=1'-0"

ELEVATIONS AND SECTIONS

No.	DATE	DESCRIPTION
4	January 29, 2013	Submitted for Building Permit
3	January 9, 2013	Committee of Adjustment Hearing
2	October 2, 2012	Submitted for Preliminary Review
1	August 27, 2012	Base drawings completed



jba John Boone ARCHITECT

51 Arundel Avenue, Toronto, Ontario, M4K 3A3
Tel: 416 469 3264 Email: johnboone@rogers.com

This drawing is the Property of John Boone Architect and may be used for this project only. Scale from drawings for reference only. Dimensions to be checked and verified by the contractor on site.

58 TORBRICK ROAD

Toronto, Ontario

DRAWING SCALE 1/8"=1'-0"
PROJECT DATE AUG. 2012
PROJECT NUMBER 12A10
DRAWN BY jb

PLOT DATE : January 24, 2013

A5