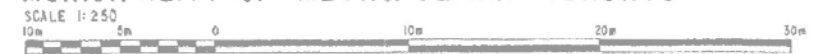
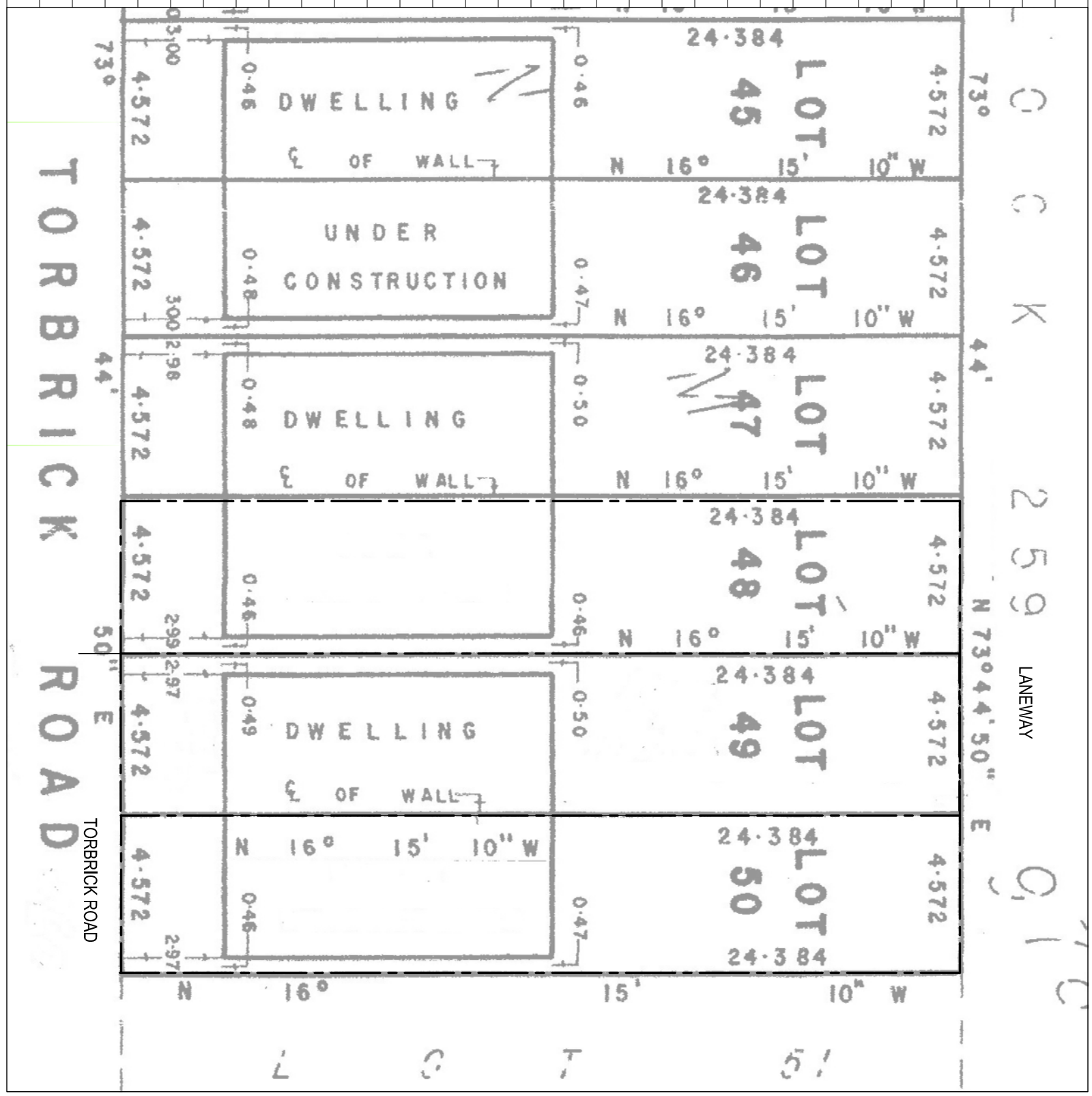


J. Rady - Pentek
JOSEPH RADY- PENTEK LTD.
 ONTARIO LAND SURVEYOR
 678 SHEPPARD AVE., W. DOWNSVIEW ONT.
 635-5886

JOB No. 80-53
 PLAN SHOWING
 LOTS 41 TO 50, BOTH INCLUSIVE, PLAN M-1978
 CITY OF TORONTO
 MUNICIPALITY OF METROPOLITAN TORONTO



METRIC
 DISTANCES SHOWN ON THIS PLAN ARE IN METRES AND CAN BE
 CONVERTED TO FEET BY DIVIDING BY 0.3048



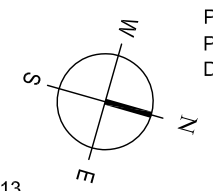
No.	DATE	DESCRIPTION
4	January 29, 2013	Submitted for Building Permit
3	January 9, 2013	Committee of Adjustment Hearing
2	October 2, 2012	Submitted for Preliminary Review
1	August 27, 2012	Base drawings completed



jba John Boone
 ARCHITECT

51 Arundel Avenue, Toronto, Ontario, M4K 3A3
 Tel: 416 469 3264 Email: johnboone@rogers.com
 This drawing is the Property of John Boone Architect and may be
 used for this project only. Scale from drawings for reference only.
 Dimensions to be checked and verified by the contractor on site.

58 TORBRICK ROAD
 Toronto, Ontario



SITE PLAN & SURVEY
 DRAWING SCALE 1:150
 PROJECT DATE AUG. 2012
 PROJECT NUMBER 12A10
 DRAWN BY jb, sb

PLOT DATE : January 24, 2013

A1.1